


**From:** Doug Whiteaker <dwhiteaker@watertechnologyinc.com>  
**Subject:** Fayetteville Stakeholders Project Progress Meeting  
**To:** Jumper, Alison <ajumper@fayetteville-ar.gov>; Farmer, Lee <lfarmer@fayetteville-ar.gov>; Rawlings, Dean <drawlings@fayetteville-ar.gov>  
**Cc:** Allison Vandever <avandever@sfsarch.com>; bgarvey@sfsarch.com; Derek McMurray <dmcurray@sfsarch.com>; Paden Crews <pcrews@thinkconfluence.com>; Hank Moyers <hmoyers@thinkconfluence.com>; PJ Novick <pjnovick@thinkconfluence.com>; Taylor Turnquist <tturnquist@watertechnologyinc.com>  
**Sent:** April 18, 2025 7:25 PM (UTC+00:00)  
**Attached:** Fayetteville Aquatic Study Agenda 2025-04-18.pdf, 2025.04.17 - SFS Fayetteville Aquatics Study - Floor Plan Options A & B.pdf, 24182\_04.16.25 - Confluence Site Concept Development.pdf, WTI Concept 4 - Fayetteville 2025-04-18.pdf

**CAUTION:** This email originated from outside of the City of Fayetteville. Do not click links or open attachments unless you recognize the sender and know the content is safe.

Hello All,

I want to thank everyone for their participation and continued contributions to making this a meaningful project for the community. Attached is the information we discussed at today's meeting for your review and comments. Please get any edits to this direction back to me ASAP so the design team has a chance to respond in preparation for our May 6<sup>th</sup> Stakeholder Steering Committee meeting. In the next week we will be receiving some ideation boards as to what Wilson Park might become for community and neighborhood engagements. I will be creating meeting notes over the weekend so you can review next week.

Thank You All and Have a Blessed Easter, Doug

 **WTI**  
Douglass Whiteaker  
Principal  
t. 920.887.7375 | m. 920.210.1110

# **Fayetteville Community Aquatic Master Planning**

Community and Stakeholders Meeting Preparation Agenda

April 18, 2024

**Introductions-** It has been awhile

## **Fayetteville Leadership Update-**

Community Engagement feedback

Confirm Schedule and Locations for meetings

## **Water Technology-**

Review Aquatic Concept Block Plan

## **Confluence-**

Site Analysis

## **SFS Architecture-**

Building Configurations

## **Confluence-**

Wilson Park Public Engagement Boards

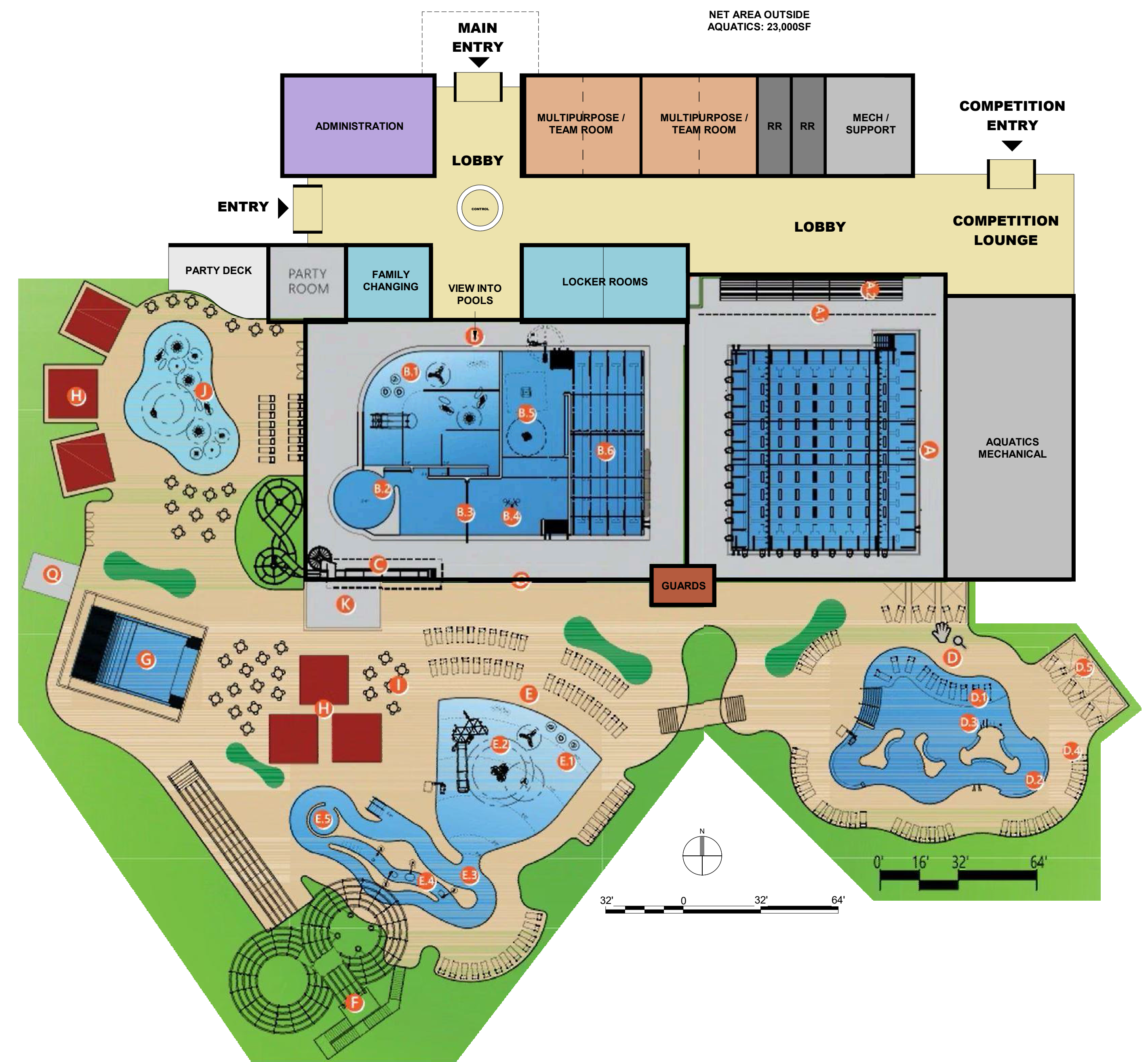
## **Team-**

Project Cost opinion updates and initial operations input from BKA Schedule

Discussion and Next Steps for May 6<sup>th</sup> Meeting



1 FLOOR PLAN - LEVEL 1 - OPTION A  
 PD003 1/32" = 1'-0"



2 FLOOR PLAN - LEVEL 1 - OPTION B  
 PD003 1/32" = 1'-0"

# FLOOR PLANS - N. Lewis Ave + W. Mount Comfort Rd - Options A & B

Fayetteville AR Aquatics Study | 04/17/2025

An aerial photograph of a residential neighborhood with a large green lawn in the center. On the lawn, there are several tennis courts with green and red surfaces. A long, white, rectangular structure, possibly a pool or a building, is visible in the middle ground. The surrounding area is filled with trees and houses.

CONFLUENCE

**FAYETTEVILLE AQUATICS FACILITY**

04.16.2025

# FACILITY CALCULATIONS | AQUATIC FACILITY PRECEDENTS

## SAR-KO-PAR AQUATIC CENTER

LOCATION: LENEXA, KANSAS  
BATHER LOAD: 750 USERS  
POOL AREA SQFT: 66,920 SQFT  
TOTAL PARKING STALLS: 268

### PARKING CALCS

1 PARKING STALL | 250 SQFT  
.35 PARKING STALLS | 1 BATHER

## AD ASTRA POOL

LOCATION: LENEXA, KANSAS  
BATHER LOAD: 450 USERS  
POOL AREA SQFT: 45,092 SQFT  
TOTAL PARKING STALLS: 158

### PARKING CALCS

1 PARKING STALL | 285 SQFT  
.35 PARKING STALLS | 1 BATHER

## CHICO AQUATICS & REC CENTER

LOCATION: CHICO, CALIFORNIA  
BATHER LOAD: 1,125 USERS  
POOL AREA SQFT: 99,567 SQFT  
TOTAL PARKING STALLS: 281

### PARKING CALCS

1 PARKING STALL | 354 SQFT  
.24 PARKING STALLS | 1 BATHER

## GARDEN RAPIDS AT THE BIG POOL

LOCATION: GARDEN CITY, KANSAS  
POOL AREA SQFT: 79,796 SQFT  
TOTAL PARKING STALLS: 178

### PARKING CALCS

1 PARKING STALL | 448 SQFT

## FAYETTEVILLE AQUATICS

### EXPECTED BATHER LOAD

1,750 users

### PARKING RECOMMENDATION

1 parking stall per 334 sqft OR .28 stalls per bather

492 total parking stalls (159,900 sqft / 3.67 ac)

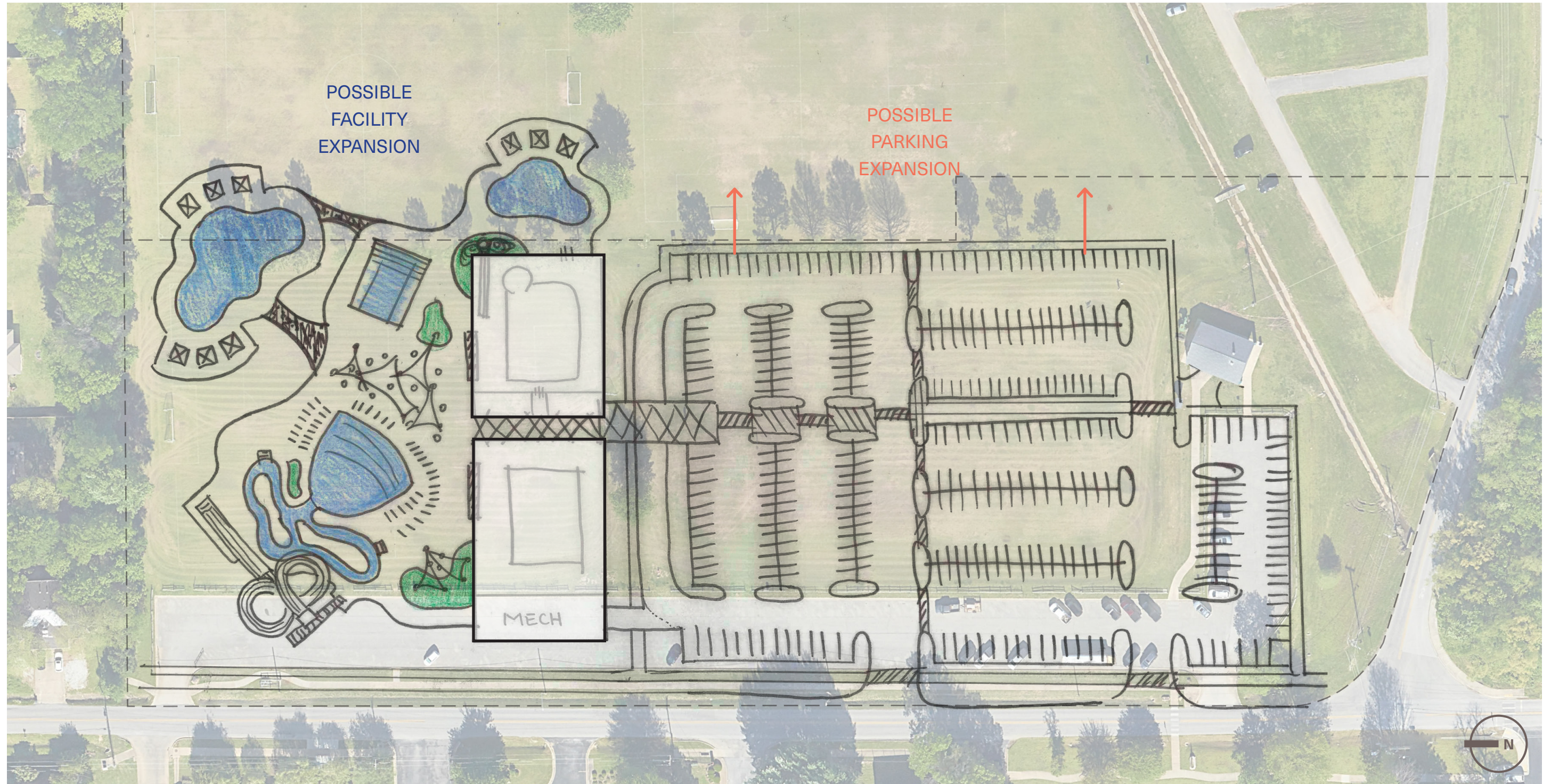
### FACILITY AREA RECOMMENDATION

164,500 SQFT (3.77 AC)

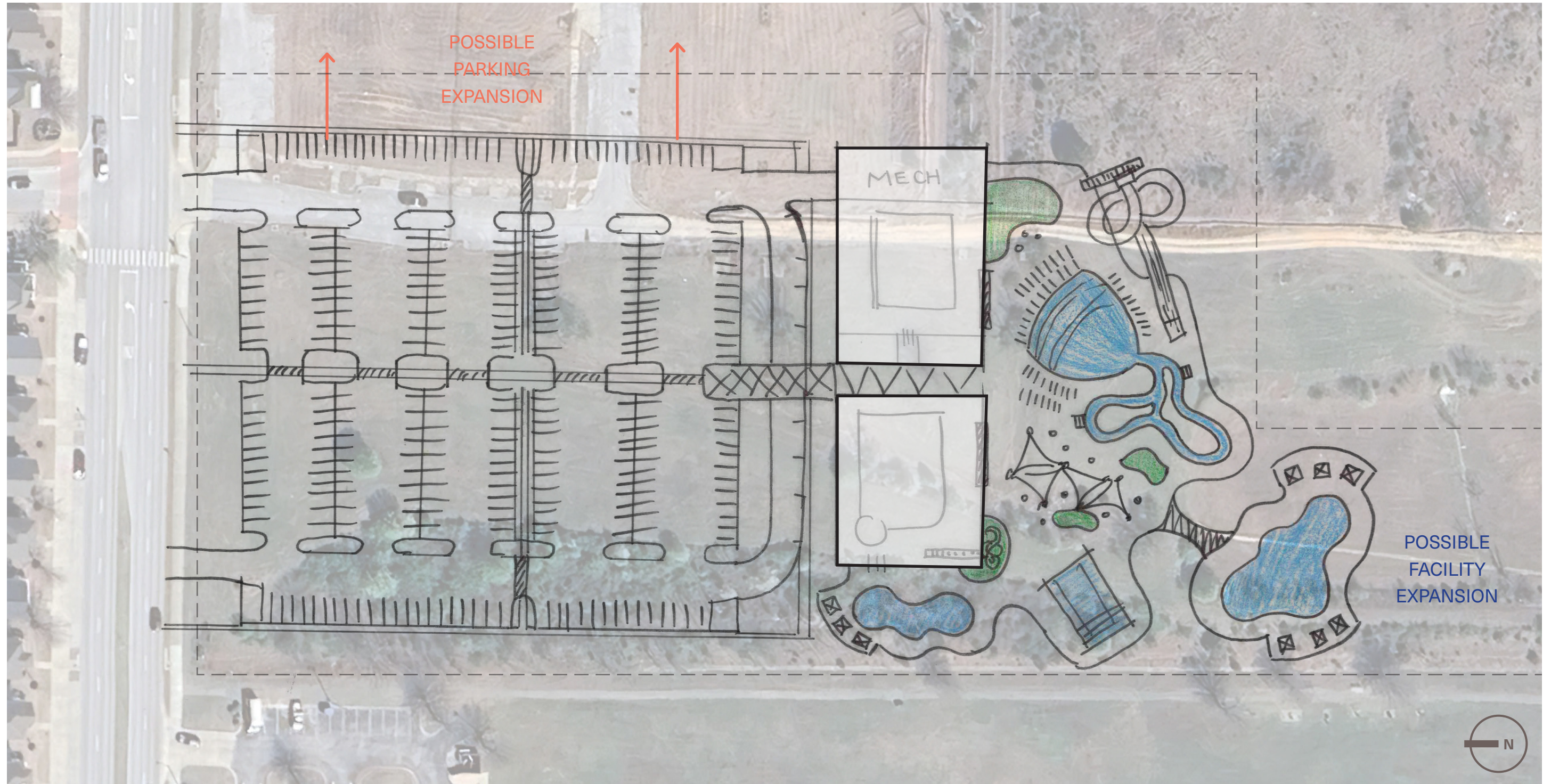
\* Parking and facility area recommendations are based from precedent facility averages

**MINIMUM POOL + PARKING  
AREA EXPECTED: 7.44 AC**

**SITE 1** | N LEWIS AVE + W MOUNT COMFORT RD



**SITE 2** | N RUPPLE RD + W PERSIMMON ST



**SITE 3** | S RUPPLE RD + W ALBERTA ST



PT 4



## POOLS AND BACK OF HOUSE SPACES

- A** COMPETITION POOL | 6,260 SF  
25 YARDS BY 25 METERS
- A.1** SWAG LINE - PREVENT NON-SWIMMERS ON DECK
- A.2** SPECTATOR SEATING | 250 SPECTATORS
- B** RECREATIONAL POOL | 8,370
- B.1** ZERO DEPTH ENTRY
- B.2** VORTEX
- B.3** VOLLEYBALL NET
- B.4** BASKETBALL HOOPS
- B.5** FLOATABLES
- B.6** LAP LANES
- C** SINGLE BODY SLIDE
- D** ADULT POOL | 3,300
- D.1** SUN SHELF
- D.2** UNDERWATER BENCH SEATING
- D.3** DECK SPRAYS
- D.4** LOUNGE CHAIRS
- D.5** CABANA
- E** LIFESTYLE POOL 4,990 SF
- E.1** ZERO DEPTH ENTRY
- E.2** WATER FEATURES
- E.3** RIVER
- E.4** ACTION CHANNEL
- E.5** SOCIAL ALCOVE
- F** MAT RACER SLIDE COMPLEX
- G** SURF SIMULATOR
- H** RENTABLE PAVILIONS
- I** 4 TOP TABLES
- J** SPLASH PAD | 1,900 SF
- K** CONCESSIONS
- L** LOCKER ROOM
- M** FAMILY CHANGE ROOM
- N** POOL MECHANICAL SPACE
- O** GARAGE DOORS
- P** LIFEGUARD ROOM
- Q** TICKETING

# CONCEPT 4

